



October 23-24, 2014, NTUA

EUROPEANA SOUNDS: ATHENS TRAINING WORKSHOP OCTOBER 23-24, 2014

GETTING TO NTUA

National Technical University of Athens
Zografou Campus (Polytechnioupoli)
9 Iroon Polytechniou Str.
Zografou 157 73, Athens, Greece.

http://www.ntua.gr/map_en.html

http://map.ntua.gr/google_en.htm

NTUA Campus can be reached using Metro, Bus or Taxi.

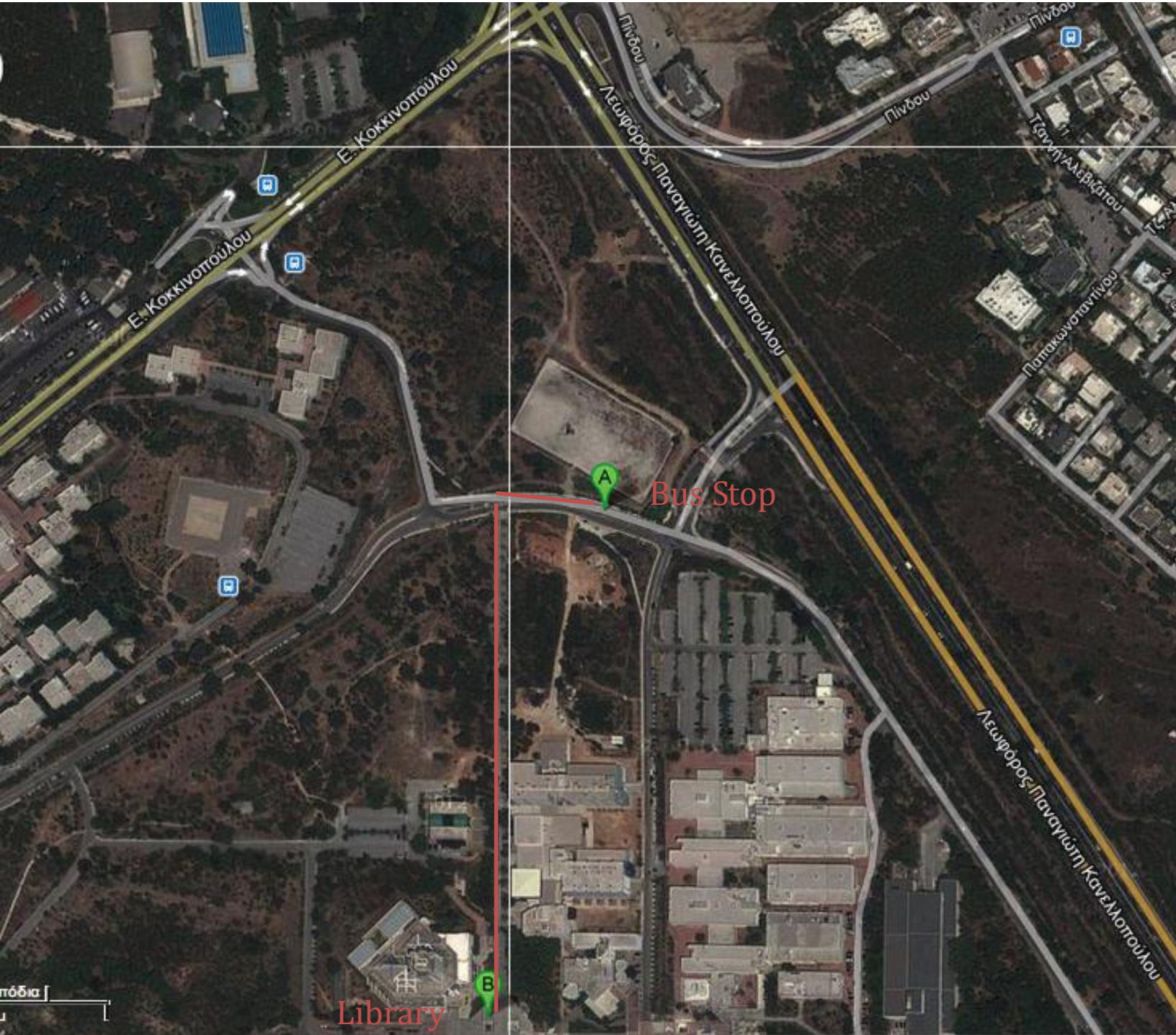
By Metro

General Info about Athens metro can be found at: <http://www.amel.gr/index.php?id=54&L=1>

The closest Metro Station is **Katehaki (blue line)**, but you'll also have to take **bus 242** to get into the campus. To reach the bus station, you have to take the **Katehaki exit** from the metro and then just cross the road (the one that HAS NOT a bridge) and go to the opposite side of the Metro entrance, the bus stop is next to a kiosk. After getting into the campus get off at the first stop. There you'll see a short path at about 20 meters before the bus stop (see the figure below). Follow that path and you'll reach the Library after 8 minutes walk. I do not recommend walking from Katehaki metro station to NTUA Campus. Although the distance may seem short (if you look it up at google maps) it is more than 30 minutes walking...

Important infos:

- Ticket price is 1.20euros (for 70 min for all transportation means and itineraries except the one to and from the airport). Validate the ticket only once. There are daily tickets or group tickets, please see more at <http://www.stasy.gr/index.php?id=71&L=1>
- The metro closes at midnight except Friday and Saturday that closes at 2:00 a.m.





By Bus

The buses that serve the NTUA Zografou campus are the following:

Bus number **608, Galatsi-Akadimia-Zografou line**. For NTUA get off the bus at the '8th of Zografou' stop and walk to the "upper" gate of the campus, which is the one at Iroon Polytechniou 9, near the Lambadario building (Rural and Survey Engineering).

Bus number **230, Acropolis-Zografou line**. For NTUA get off the bus at the '8th of Zografou' stop and walk to the "upper" gate of the campus, which is the one at Iroon Polytechniou 9, near the Lambadario building (Rural and Survey Engineering).

Bus number **242, Katehaki St. (Metro) - NTUA Campus (and back)**

From City Center you can use bus 222.



October 23-24, 2014, NTUA

Bus number **140, Polygono (Glyfada) line**, leaves from the Evelpidon Court of Law, and stops near the "lower" gate of the campus, on the cross of Katehaki Av. and Kokkinopoulou St. You can also get on this bus at the intersection of Mesogeion Av. and Katehaki Av., where it also stops. The disadvantage in using this bus is that one has to walk for about 15 minutes, from the "lower" gate to the buildings of the campus.

By Taxi

Directly from the airport, it costs around 35 Euros and takes around 20-30 minutes. From the city center, it costs around 7-10 Euros and takes 20-40 minutes, depending on your location and traffic. You may also use the metro and then take a taxi (just 5 minutes), but it's not always easy to find a taxi at Katehaki metro station. If not clarified, some taxi drivers have a tendency to go to the old NTUA buildings at the city center at Patisision Str. Please make clear to the taxi driver that you are going to **Polytechniupoli Zographou Campus** and **NOT** Patisision avenue!!! Emphasize also on **Polytechniupolis** (Panepistimiupolis - university campus - is next to Polytechniupolis and sometimes taxi drivers are confused). Taxis (or private cars) can enter the campus only through the Katehaki and Kokkinopoulou entrances. From Katehaki entrance, cross the first road you meet and then go straight. From Kokkinopoulou entrance, turn left at the first crossroad and right at the next crossroad. There will be signs to show you the way to the library.

Detailed information on how to reach NTUA campus using any mean of transportation can be found at: http://www.ntua.gr/map_en.html

Recommendations:

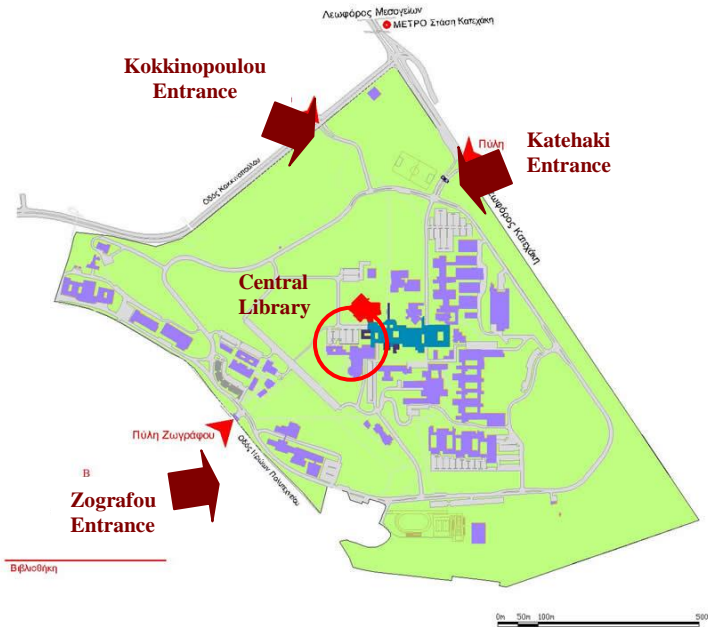
- Metro + Bus 242
- Taxi

VENUE

The meeting will be held at the ground floor of the **Central Library Building** within NTUA campus. Wireless and cable internet connection will be available.

The map presented below shows a top view of the NTUA campus. Highlighted in red are the three campus entrances, as well as the library building (in a circle). I also provide some images of the building, so you can recognize it when you see it.

October 23-24, 2014, NTUA



NTUA campus map, http://www.ntua.gr/map_en.html, http://map.ntua.gr/google_en.htm



Outside view of Central Library Building



October 23-24, 2014, NTUA

For more detailed maps of NTUA Campus, visit:

- http://www.ntua.gr/map_en.html,
- http://map.ntua.gr/google_en.htm
- <http://maps.google.com/maps/ms?ie=UTF8&hl=en&msa=0&msid=113279231671210011751.0004417c293e7795f6d38&ll=37.978532,23.783019&spn=0.025134,0.039825&t=h&z=15&om=1>

When using google maps, prefer satellite view, to see exactly where the buildings are within the Campus.

RECOMMENDED HOTEL LIST

Athens Plaza Hotel (***)**

<http://www.njvathensplaza.gr/en/>

2, Vas. Georgiou A,
Constitution Square (Syntagma),
105 64, Athens
T: +30 210 33 52 400, F: +30 210 32 35 856
E: welcome@njvathensplaza.gr

Amalia Hotel (**)**

<http://www.amaliahotelathens.gr/en>

10, Amalia boulevard,
Athens, 105 57
At Syntagma Square (metro Syntagma)
Tel: +30.210.3237300, Fax: +30.210.3237309
Email : reservations@amaliahotels.com

A for Athens

<http://aforathens.com/>

2-4, Miaouli Str., Monastiraki, Athens
At Monastiraki square (metro Monastiraki)
Tel: (+30) 210 32 44 244
Email: info@aforathens.com

Electra Hotel (*)**

<http://www.electrahotels.gr/electra-hotel-athens/the-hotel>

5, Ermou Str., 10563 Athens
Tel: +30 210 3378000, Fax: +30 210 3220310
email: ehconcierge@electrahotels.gr
In the most known shopping pedestrian road in Athens
(metro Syntagma)



October 23-24, 2014, NTUA

Plaka Hotel (*)**

<http://www.plakahotel.gr/>

7 Kapnikareas Str.,
Plaka, Athens.

Tel: +30-210-3222.096-8

Situated in the Plaka area, near to Acropolis, a few blocks from Syntagma Square. It is in-between Syntagma and Monastiraki metro stations. Suitable for sightseeing and night walks. 30-40 minutes from NTUA campus using metro and bus.

Hermes Hotel (*)**

<http://www.hermeshotel.gr/>

19 Apollonos str,
Plaka, Athens.

Tel: +30 210 3222706

This hotel is down-town, located in the area of Plaka, near to Acropolis, in-between Syntagma and Monastiraki metro stations. Suitable for sightseeing and night walks. 30-40 minutes from NTUA campus using metro and bus.

Best Western Esperia Palace (**)**

<http://bestwestern-esperiapalace.h-rez.com/>

22, Stadiou Str. - 105 64 Athens, Greece

Tel.: +30 210 3238001 , Fax: +30 210 3238100

This hotel is located **down town** and is close to the metro station "Syntagma".

Stratos Vassilikos Hotel (***)**

http://www.airotel.gr/hotel/stratos_vasilikos

114 Michalakopoulou avenue,
11527 Athens.

Stylish newly renovated hotel in the heart of Athens city..

Tel : +30 210-7207000, Fax : +30 210-7236683

Hotel Golden Age (**)**

<http://hotelgoldenage.com/>

57, Michalakopoulou st.
115 28 Athens

Tel.: +30 210 72 40 861 (9 Lines), Fax: +30 210 72 13 965

We recommend you to book a hotel near the city center for your facility of moving around and sightseeing.

However, if you prefer a hotel close to NTUA please see the following link of a general view of hotels, metro stations etc around NTUA campus:

<http://maps.google.com/maps/ms?ie=UTF8&hl=en&msa=0&msid=113279231671210011751.0004417c293e7795f6d38&ll=37.978532,23.783019&spn=0.025134,0.039825&t=h&z=15&om=1>



October 23-24, 2014, NTUA

All hotels can be accessed via the official website provided above or via one of the following hotel booking websites. It is recommended that you check both options for better prices. The prices above are only indicative and may vary depending on room availability. More hotel options can be found at the following hotel booking websites:

- <http://www.booking.com/city/gr/athens.en.html>
- <http://www.europe-cities.com/hotels-athens.aspx>

OTHER INFORMATION

Weather forecast: http://www.hnms.gr/hnms/english/index_html

Online maps:

- <http://maps.google.com>
- <http://www.driveme.gr>
- <http://maps.msn.com>

Transportation links:

- Attiko Metro: <http://www.ametro.gr/page/default.asp?id=4&la=2>
- NTUA Real-time traffic map: <http://www.transport.ntua.gr/map/en/index.php>
- Athens International Airport "Eleftherios Venizelos": <http://www.aia.gr>
- Athens-Piraeus Electric Railways S.A.:
http://www.stasy.gr/index.php?id=1&no_cache=1&L=1
- Suburban Railways: <http://www.trainose.gr/en/passenger-activity/suburban-railway/athens-suburban-railway/>
- Athens Urban Transport Organization (Buses): <http://www.oasa.gr/?id=ind3ex&lang=en>

For anything else in Athens such as history, sightseeing, going out, news, events, shopping and so on, check:

- <http://www.greece-athens.com/>

In case you get lost or you need anything else our mobile phone numbers are:
+30 6948667602 (Katerina), +30 6932727661 (Vassilis), +306942602794 (Nikos)